

30-2185: Anti-HLA-Class I Monoclonal Antibody (Clone:MEM-147)-PE Conjugated

| | |
|--------------------------------|--|
| Clonality : | Monoclonal |
| Clone Name : | MEM-147 |
| Application : | FACS |
| Reactivity : | Human |
| Conjugate : | PE |
| Gene : | HLA-A |
| Uniprot ID : | P01892 |
| Alternative Name : | HLA-A, HLAA |
| Isotype : | Mouse IgG1 |
| Immunogen Information : | PHA-activated peripheral blood lymphocytes |

Description

HLA-class I major histocompatibility (MHC) antigens are intrinsic membrane glycoproteins expressed on nucleated cells and noncovalently associated with an invariant beta2 microglobulin. They carry foreign determinants important for immune recognition by cytotoxic T cells, thus important for anti-viral and anti-tumour defence. Human HLA-class I antigens are represented by HLA-A, HLA-B and HLA-C molecules.

Product Info

| | |
|----------------------------|---|
| Amount : | 0.1 mg |
| Storage condition : | Store in the dark at 2-8°C. Do not freeze. Avoid prolonged exposure to light. |

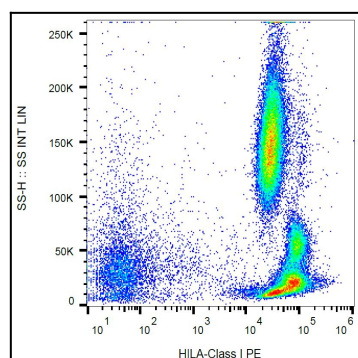


Figure 1:: Surface staining of human peripheral blood with anti-HLA-class I (MEM-147) PE.