

30-1612: Anti-HLA-Class I Monoclonal Antibody (Clone:W6/32)-Low Endotoxin

Clonality :	Monoclonal
Clone Name :	W6/32
Application :	FACS
Reactivity :	Human
Gene :	HLA-A
Uniprot ID :	P01892
Format :	Low Endotoxin
Alternative Name :	HLA-A, HLAA
Isotype :	Mouse IgG2a
Immunogen Information :	Membrane of human tonsil cells

Description

HLA-class I major histocompatibility (MHC) antigens are intrinsic membrane glycoproteins expressed on nucleated cells and noncovalently associated with an invariant beta2 microglobulin. They carry foreign determinants important for immune recognition by cytotoxic T cells, thus important for anti-viral and anti-tumour defence. Human HLA-class I antigens are represented by HLA-A, HLA-B and HLA-C molecules.

Product Info

Amount :	0.1 mg
Purification :	Purified by protein-A affinity chromatography
Storage condition :	Store at 2-8°C. Do not freeze.

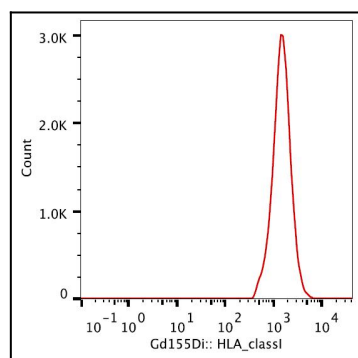


Figure 1: Surface staining (mass cytometry) of PBMC after Ficoll-Paque separation with anti-HLA-class I (W6/32) Gd155. Gated on DNA.