

30-2331: PE Conjugated Anti-EGFR Monoclonal Antibody (Clone:EGFR1)

Clonality :	Monoclonal
Clone Name :	EGFR1
Application :	FACS
Reactivity :	Human
Conjugate :	PE
Gene :	EGFR
Gene ID :	1956
Uniprot ID :	P00533
Alternative Name :	EGFR,ERBB,ERBB1,HER1
Isotype :	Mouse IgG2b
Immunogen Information :	Human epidermoid carcinoma line A431

Description

The oncoprotein EGFR (epidermal growth factor receptor), also known as HER1 / ErbB1, is a member of ErbB family of cell surface receptor tyrosine kinases. This 170 kDa transmembrane glycoprotein is often associated with cancerogenesis, although its activation state is controlled at various levels including trafficking and degradation steps. Binding of receptor-specific ligands to the EGFR ectodomain results in formation of homodimeric or heterodimeric kinase-active complexes into which HER2 / ErbB2 is recruited as a preferred partner. Subsequent signaling cascades such as RAS/MAPK and PI3K/AKT pathways lead to cell proliferation and survival responses.

Product Info

Amount :	100 tests
Storage condition :	Store in the dark at 2-8°C. Do not freeze. Avoid prolonged exposure to light.

Application Note

Flow cytometry: The reagent is designed for analysis of human blood cells using 10 µl reagent / 100 µl of whole blood or 10⁶ cells in a suspension. The content of a vial (1 ml) is sufficient for 100 tests.

Flow cytometry: The reagent is designed for analysis of human blood cells using 10 µl reagent / 100 µl of whole blood or 10⁶ cells in a suspension. The content of a vial (1 ml) is sufficient for 100 tests.

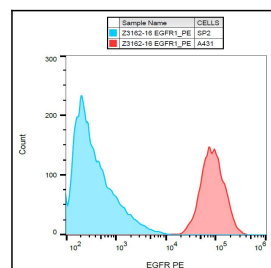


Figure 1: Surface staining of EGFR on A431 cells with anti-EGFR (EGFR1) PE.