

30-1041: Anti-Cytokeratin 18 Monoclonal Antibody (Clone:C-04)

| | |
|--------------------------------|---|
| Clonality : | Monoclonal |
| Clone Name : | C-04 |
| Application : | IP,ICC,ELISA,IHC,FACS,WB |
| Gene : | KRT18 |
| Gene ID : | 3875 |
| Uniprot ID : | P05783 |
| Format : | Purified |
| Alternative Name : | KRT18,CYK18,PIG46 |
| Isotype : | Mouse IgG1 |
| Immunogen Information : | Cytoskeleton preparation of epidermal carcinoma cell line A431. |

Description

Cytokeratins are a subfamily of intermediate filaments and characterized by remarkable biochemical diversity. Cytokeratins are represented in epithelial tissues by at least 20 different polypeptides, molecular weight between 40 kDa and 68 kDa. The individual cytokeratin polypeptides are designated 1 to 20 and divided into the type I (acidic cytokeratins 9-20) and type II (basic to neutral cytokeratins 1-8) families. Cytokeratins 18 belongs to type I family (acidic cytokeratins).

Product Info

| | |
|----------------------------|---|
| Amount : | 0.1 mg |
| Purification : | Purified by protein-A affinity chromatography |
| Storage condition : | Store at 2-8°C. Do not freeze. |

Application Note

Western blotting: Recommended dilution: 1-2 µg/ml.

Immunohistochemistry (paraffin sections): Recommended dilution: 10 µg/ml; positive control: colon, kidney.

ELISA: The antibody C-04 has been tested as the capture antibody in a sandwich ELISA for analysis of cytokeratin 18 in combination with the antibody DA-7 and with the antibody DC-10 .

Flow cytometry: Recommended dilution: 1-4 µg/ml. Intracellular staining.

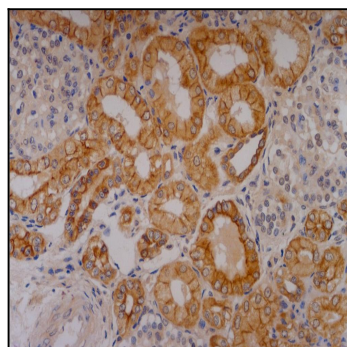


Figure 1: Immunohistochemistry of paraffin-embedded sections (kidney) Figure 1: Immunohistochemistry staining of human kidney (paraffin-embedded sections) with anti-cytokeratin 18 (C-04).