

30-2115: PE Conjugated, Anti-Cytokeratin (Pan-reactive) Monoclonal Antibody (Clone:C-11)

Clonality :	Monoclonal
Clone Name :	C-11
Application :	WB
Conjugate :	PE
Isotype :	Mouse IgG1
Immunogen Information :	Keratin-enriched preparation from human epidermoid carcinoma cell line A431.

Description

Cytokeratins are a subfamily of intermediate filaments and characterized by remarkable biochemical diversity. Cytokeratins are represented in epithelial tissues by at least 20 different polypeptides, molecular weight between 40 kDa and 68 kDa. The individual cytokeratin polypeptides are designated 1 to 20 and divided into the type I (acidic cytokeratins 9-20) and type II (basic to neutral cytokeratins 1-8) families.

Product Info

Amount :	0.1 mg
Storage condition :	Store in the dark at 2-8°C. Do not freeze. Avoid prolonged exposure to light.

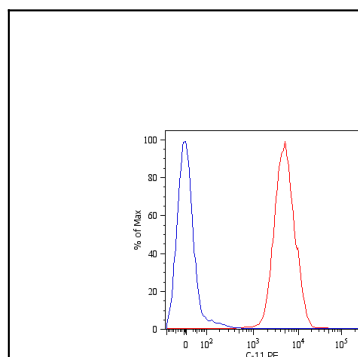


Figure 1: Intracellular flow cytometry analysis of cytokeratin expression in HT-29 human Caucasian colon adenocarcinoma cell line using anti-cytokeratin antibody (C-11) PE. Overlay with Isotype mouse IgG1 control