

### 30-1379: Anti-CPNE7 Monoclonal Antibody (Clone:CPNE7-01)

<b>Clonality :</b>	Monoclonal
<b>Clone Name :</b>	CPNE7-01
<b>Application :</b>	WB
<b>Reactivity :</b>	Human
<b>Gene :</b>	CPNE7
<b>Gene ID :</b>	27132
<b>Uniprot ID :</b>	Q9UBL6
<b>Format :</b>	Purified
<b>Alternative Name :</b>	CPNE7
<b>Isotype :</b>	Mouse IgG
<b>Immunogen Information :</b>	Bacterially produced GST-fused C terminus of human CPNE7.

#### Description

CPNE7 (copine VII) is a member of highly conserved copine family, which is composed of calcium-dependent membrane-binding proteins containing two N-terminal C domains and a C-terminal A domain (von Willenbrand domain). There is an evidence that copines (at least copine III) may represent a novel unconventional kinase family. CPNE7 is expressed mainly in brain, but also in duodenum, jejunum, thymus and testes.

#### Product Info

<b>Amount :</b>	0.1 mg
<b>Purification :</b>	Purified by protein-A affinity chromatography
<b>Storage condition :</b>	Store at 2-8°C. Do not freeze.

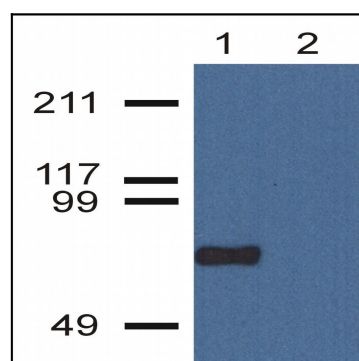


Figure 1: Western Blotting analysis of CPNE7 using CPNE7-01 antibody in nuclear cell lysate (1) and cytoplasmic fraction (2) of HeLa cell extracts.