

30-2345: PE Conjugated, Anti-CLIC5a Monoclonal Antibody (Clone:CLIC5-02)

Clonality :	Monoclonal
Clone Name :	CLIC5-02
Application :	FACS
Reactivity :	Human
Conjugate :	PE
Gene :	CLIC5
Gene ID :	53405
Uniprot ID :	Q9NZA1
Alternative Name :	CLIC5
Isotype :	Mouse IgG2b
Immunogen Information :	KLH-conjugated peptide corresponding to the amino acids 160-173 of human CLIC5a

Description

CLIC5a belongs to the family of chloride intracellular channel (CLIC) proteins, all sharing a highly conserved C terminus and variable N terminus. Human CLIC5 is transcribed in two isoforms, 32 kDa CLIC5a (251 amino acids) and 49 kDa CLIC5b (410 amino acids). These proteins exist in a soluble form and their function as ion channels in vitro has not been fully confirmed in vivo. CLIC5a is a component of complexes of actin, ezrin, and several other actin-associated proteins and is important for functionality of actin-based structures.

Product Info

Amount :	0.1 mg
Storage condition :	Store in the dark at 2-8°C. Do not freeze. Avoid prolonged exposure to light.

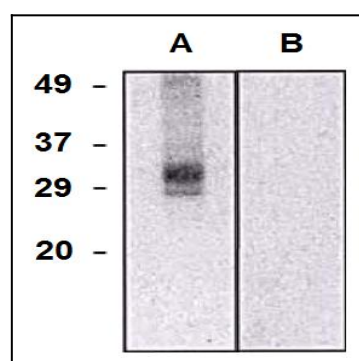


Figure 1: Western blotting analysis of CLIC5a in HEK293-CLIC5a transfectants (A) and HEK293 cells (B) using mouse monoclonal antibody (clone CLIC5-02).