

### 30-1503: Anti-CLIC5a Monoclonal Antibody (Clone:CLIC5-02)

<b>Clonality :</b>	Monoclonal
<b>Clone Name :</b>	CLIC5-02
<b>Application :</b>	FACS, WB
<b>Reactivity :</b>	Human
<b>Gene :</b>	CLIC5
<b>Gene ID :</b>	53405
<b>Uniprot ID :</b>	Q9NZA1
<b>Format :</b>	Purified
<b>Alternative Name :</b>	CLIC5
<b>Isotype :</b>	Mouse IgG2b
<b>Immunogen Information :</b>	KLH-conjugated peptide corresponding to the amino acids 160-173 of human CLIC5a

#### Description

CLIC5a belongs to the family of chloride intracellular channel (CLIC) proteins, all sharing a highly conserved C terminus and variable N terminus. Human CLIC5 is transcribed in two isoforms, 32 kDa CLIC5a (251 amino acids) and 49 kDa CLIC5b (410 amino acids). These proteins exist in a soluble form and their function as ion channels in vitro has not been fully confirmed in vivo. CLIC5a is a component of complexes of actin, ezrin, and several other actin-associated proteins and is important for functionality of actin-based structures.

#### Product Info

<b>Amount :</b>	0.1 mg
<b>Purification :</b>	Purified by protein-A affinity chromatography
<b>Storage condition :</b>	Store at 2-8°C. Do not freeze.

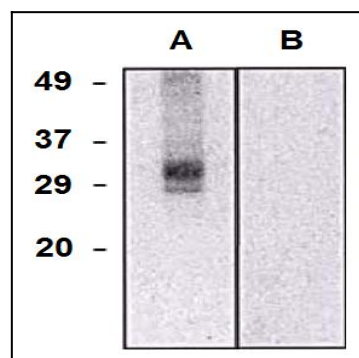


Figure 1: Western blotting analysis of CLIC5a in HEK293-CLIC5a transfectants (A) and HEK293 cells (B) using mouse monoclonal antibody (clone CLIC5-02).