

30-1967: Anti-CD98 Monoclonal Antibody (Clone:MEM-108)-FITC Conjugated

Clonality :	Monoclonal
Clone Name :	MEM-108
Application :	FACS, IP, IHC
Reactivity :	Human
Conjugate :	FITC
Gene :	SLC3A2
Gene ID :	6520
Uniprot ID :	P08195
Alternative Name :	SLC3A2, MDU1, 4F2 cell-surface antigen heavy chain, 4F2 heavy chain antigen, Lymphocyte activation antigen 4F2 large subunit, Solute carrier family 3 member 2
Isotype :	Mouse IgG1
Immunogen Information :	RAJI human Burkitt's lymphoma cell line

Description

CD98 (4F2) is a type II transmembrane glycoprotein which serves as the heavy chain of the heterodimeric amino acid transporters (HATs). CD98, linked to various light chains by disulfide bond, is responsible for cell surface expression and basolateral localization of this transporter complex in polarized epithelial cells and also interacts with beta1 integrins and increases their affinity for ligand. Besides its roles in amino acid transport, CD98 is thus involved in cell fusion and activation. It is implicated in regulation of cellular differentiation, growth and apoptosis.

Product Info

Amount :	100 tests
Storage condition :	Store in the dark at 2-8°C. Do not freeze. Avoid prolonged exposure to light.

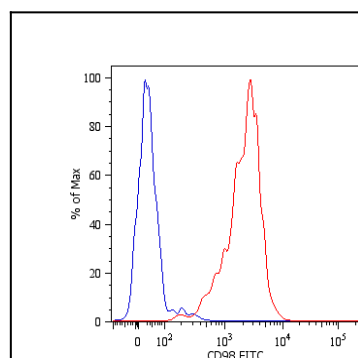


Figure 1: Surface staining of human peripheral blood cells with anti-human CD98 (MEM-108) FITC. Cells in the monocyte gate were used for analysis.