

30-2158: Anti-CD8 Monoclonal Antibody (Clone:MEM-31)-PE Conjugated

Clonality :	Monoclonal
Clone Name :	MEM-31
Application :	FACS, IP
Reactivity :	Human
Conjugate :	PE
Gene :	CD8A
Gene ID :	925
Uniprot ID :	P01732
Alternative Name :	T-lymphocyte differentiation antigen T8/Leu-2, CD8a, MAL
Isotype :	Mouse IgG2a
Immunogen Information :	Crude thymus membrane fraction.

Description

The CD8 T cell coreceptor (monomer approx. 32-34 kDa) is expressed as alpha/beta heterodimer on majority of MHC I-restricted conventional T cells and thymocytes and as alpha/alpha homodimer on subsets of memory T cells, intraepithelial lymphocytes, NK cells and dendritic cells. Regulation of CD8 beta level on T cell surface seems to be an important mechanism to control their effector function. Assembly of CD8 alpha-beta but not alpha-alpha dimers is connected with formation or localization to the lipid rafts. Recruiting triggered TCR complexes to these membrane microdomains as well as affinity of TCR to MHC I is modulated by CD8, thereby affecting the functional diversity of the TCR signaling.

Product Info

Amount :	100 tests
Storage condition :	Store in the dark at 2-8°C. Do not freeze. Avoid prolonged exposure to light.

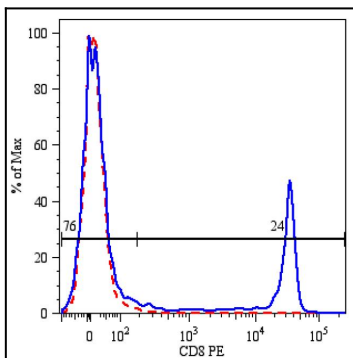


Figure 1: Surface staining of human peripheral blood lymphocytes using anti-human CD8 (clone MEM-31) PE.