

30-2369: Anti-CD68 Monoclonal Antibody (Clone:Y1/82A)-PE Conjugated

Clonality :	Monoclonal
Clone Name :	Y1/82A
Application :	FACS, IHC-Fr
Reactivity :	Human
Conjugate :	PE
Gene :	CD68
Gene ID :	968
Uniprot ID :	P34810
Alternative Name :	CD68
Isotype :	Mouse IgG2b
Immunogen Information :	Lysosomal contents of lung macrophages

Description

CD68 (also known as LAMP4 or SCARD1) is a 110 kDa type I transmembrane glycoprotein of the lysosomal/endosomal-associated membrane glycoprotein (LAMP) family and the scavenger receptor family. Although CD68 primarily localizes to lysosomes and endosomes, its fraction circulates to the cell surface. By the heavily glycosylated extracellular domain CD68 binds to tissue- and organ-specific lectins or selectins. It is expressed mainly in cytoplasmic granules of monocytes/macrophages, granulocytes, and dendritic cells, but also e.g. in a proportion of epithelial tumours (diagnosis of poorly differentiated neoplasms).

Product Info

Amount :	100 tests
Storage condition :	Store in the dark at 2-8°C. Do not freeze. Avoid prolonged exposure to light.

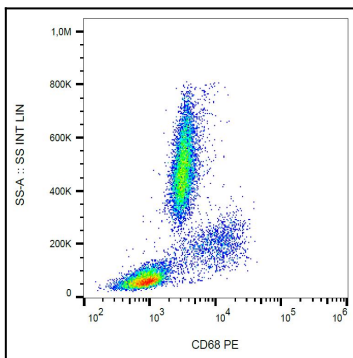


Figure 1: Intracellular staining of human peripheral blood cells with anti-CD68 (Y1/82A) PE.