

## 30-1333: Anti-CD66e / CEA Monoclonal Antibody (Clone:CB30)

<b>Clonality :</b>	Monoclonal
<b>Clone Name :</b>	CB30
<b>Application :</b>	FACS, IP, IHC, IHC-Fr
<b>Reactivity :</b>	Human
<b>Gene :</b>	CEACAM5
<b>Gene ID :</b>	1048
<b>Uniprot ID :</b>	P06731
<b>Format :</b>	Purified
<b>Alternative Name :</b>	CEACAM5,CEA
<b>Isotype :</b>	Mouse IgG1
<b>Immunogen Information :</b>	Human carcinoembryonic antigen (CEA; CEACAM5)

### Description

The CD66e (CEA; 180-200 kDa) is a member of carcinoembryonic antigens, immunoglobulin supergene family and consists of a single N domain (structural homology to the immunoglobulin variable) and six immunoglobulin constant-like A (A1, A2, A3) and B domains (B1, B2, B3). Human CD66e is heavily glycosylated GPI anchored protein capable of both homophilic and heterophilic adhesion. Disease relevance: The CD66e may play a role in the process of metastasis of cancer cells. CD66e is found in serum and it is clinically used as a tumor marker for early detection of disease due to its expression in adenocarcinomas - potential target of tumor imaging and drug targeting.

### Product Info

<b>Amount :</b>	0.1 mg
<b>Purification :</b>	Purified by protein-A affinity chromatography
<b>Storage condition :</b>	Store at 2-8°C. Do not freeze.

### Application Note

**Immunohistochemistry** *Recommended dilution:* 10  $\mu$ g/ml (1:100)

*Positive tissue:* Adenocarcinoma of colon

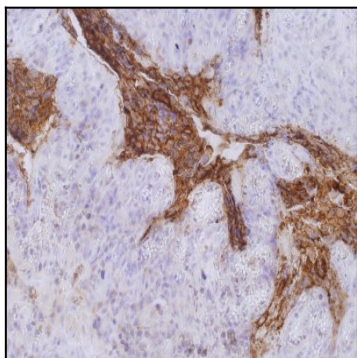


Figure 1: Immunohistochemistry staining of colorectal carcinoma (paraffin-embedded sections) with anti-human CD66e (CB30). Primary antibody dilution: 10  $\mu$ g/ml.

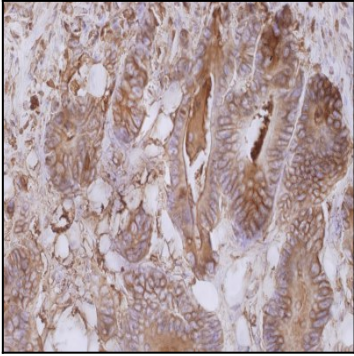


Figure 2: Immunohistochemistry staining of colorectal carcinoma (paraffin-embedded sections) with anti-human CD66e (CB30). Primary antibody dilution: 10  $\mu$ g/ml.