

## 30-2065: FITC Conjugated, Anti-CD64 / FcgammaRI Monoclonal Antibody (Clone:10.1)

<b>Clonality :</b>	Monoclonal
<b>Clone Name :</b>	10.1
<b>Application :</b>	FACS
<b>Reactivity :</b>	Human
<b>Conjugate :</b>	FITC
<b>Gene :</b>	FCGR1A
<b>Gene ID :</b>	2209
<b>Uniprot ID :</b>	P12314
<b>Alternative Name :</b>	FCGR1A,FCG1,FCGR1,IGFR1
<b>Isotype :</b>	Mouse IgG1
<b>Immunogen Information :</b>	Rheumatoid synovial fluid cells and fibronectin purified human monocytes

### Description

CD64 (FcgammaRI) is a cell surface receptor for Fc region of IgG. It is composed of specific ligand binding alpha subunit and promiscuous gamma subunit, which is indispensable for tyrosine-based signaling. However, even the alpha subunit can transduce signals leading to cellular effector functions. The isoform FcgammaRIa1 binds human IgG with high affinity, has limited myeloid cell distribution, and a relatively large intracellular domain. Products of related genes include FcgammaRIb and FcgammaRIc isoforms, but these specify low affinity IgG receptors if functionally expressed at all. Besides a role in antigen clearance, FcgammaRI (a1) can potently enhance MHC class I and II antigen presentation in vitro and in vivo.

### Product Info

<b>Amount :</b>	100 tests
<b>Storage condition :</b>	Store in the dark at 2-8°C. Do not freeze. Avoid prolonged exposure to light.

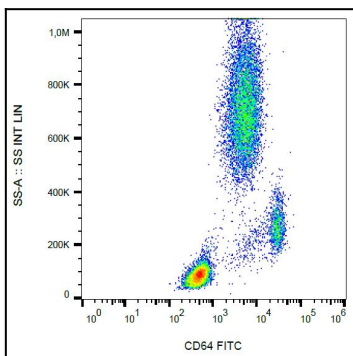


Figure 1: Surface staining of CD64 in human peripheral blood with anti-CD64 (10.1) FITC.