

30-2062: Anti-CD62L / L-Selectin Monoclonal Antibody (Clone:DREG56)-FITC Conjugated

Clonality :	Monoclonal
Clone Name :	DREG56
Application :	FACS, IP, WB, IHC-Fr, Functional Assay
Reactivity :	Human
Conjugate :	FITC
Gene :	SELL
Gene ID :	6402
Uniprot ID :	P14151
Alternative Name :	SELL, LNHR, LYAM1
Isotype :	Mouse IgG1
Immunogen Information :	PMA-activated human peripheral blood leukocytes

Description

CD62L (L-selectin) is an adhesion glycoprotein that is constitutively expressed on the cell surface of leukocytes and mediates their homing to inflammatory sites and peripheral lymph nodes by enabling rolling along the venular wall. CD62L is also involved in activation-induced neutrophil aggregation. Activation-dependent CD62L shedding, however, counteracts neutrophil rolling. CD62L has also signaling roles including enhance of chemokine receptor expression. Similarly to CD62P, the major ligand of CD62L is PSGL-1 (P-selectin glycoprotein ligand-1). The level of CD62L expression can be used to help distinguish naive T cells from effector/memory T cells.

Product Info

Amount :	100 tests
Storage condition :	Store in the dark at 2-8°C. Do not freeze. Avoid prolonged exposure to light.

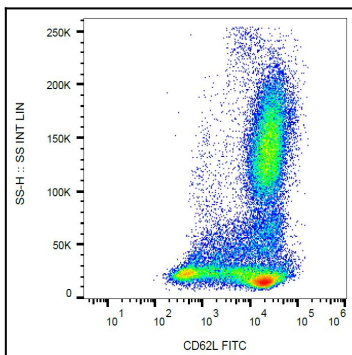


Figure 1: Surface staining of CD62L in human peripheral blood with anti-CD62L (DREG56) FITC.