

## 30-1730: Anti-CD62L / L-selectin Monoclonal Antibody (Clone:LT-TD180)-APC Conjugated

|                                |                             |
|--------------------------------|-----------------------------|
| <b>Clonality :</b>             | Monoclonal                  |
| <b>Clone Name :</b>            | LT-TD180                    |
| <b>Application :</b>           | FACS                        |
| <b>Reactivity :</b>            | Human                       |
| <b>Conjugate :</b>             | APC                         |
| <b>Gene :</b>                  | SELL                        |
| <b>Gene ID :</b>               | 6402                        |
| <b>Uniprot ID :</b>            | P14151                      |
| <b>Alternative Name :</b>      | SELL, LNHR, LYAM1           |
| <b>Isotype :</b>               | Mouse IgG1                  |
| <b>Immunogen Information :</b> | Peripheral blood leukocytes |

### Description

CD62L (L-selectin) is an adhesion glycoprotein that is constitutively expressed on the cell surface of leukocytes and mediates their homing to inflammatory sites and peripheral lymph nodes by enabling rolling along the venular wall. CD62L is also involved in activation-induced neutrophil aggregation. Activation-dependent CD62L shedding, however, counteracts neutrophil rolling. CD62L has also signaling roles including enhance of chemokine receptor expression. Similarly to CD62P, the major ligand of CD62L is PSGL-1 (P-selectin glycoprotein ligand-1).

### Product Info

|                            |   |
|----------------------------|---|
| <b>Amount :</b>            | 100 tests   |
| <b>Storage condition :</b> | Store in the dark at 2-8°C. Do not freeze. Avoid prolonged exposure to light. |

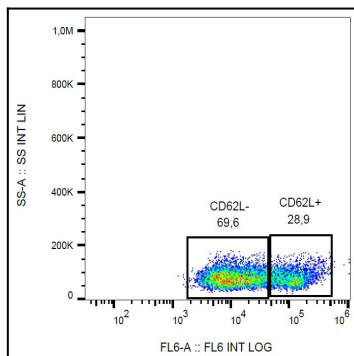


Figure 1: Surface staining of human peripheral blood cells with anti-CD62L (LT-TD180) APC.