

30-2156: Anti-CD6 Monoclonal Antibody (Clone:MEM-98)-PE Conjugated

Clonality :	Monoclonal
Clone Name :	MEM-98
Application :	FACS, IP, WB, IHC
Reactivity :	Human
Conjugate :	PE
Gene :	CD6
Gene ID :	923
Uniprot ID :	P30203
Alternative Name :	CD6
Isotype :	Mouse IgG1
Immunogen Information :	Human CD6 antigen purified by immunoaffinity chromatography from HBP-ALL cells followed by preparative SDS-PAGE of non-boiled non-reduced sample (excised piece of gel corresponding to the 100 kDa zone).

Description

CD6, also known as T12, is a member of the scavenger receptor superfamily found on T and B cell subsets, thymocytes, and acute lymphocytic leukemia cells (ALL). CD6 interacts with its ligand CD166/ALCAM (activated leukocyte cell adhesion molecule) and serves as a coreceptor for T cell activation and stabilizer of the immunological synapse. CD6-ALCAM mediated cell adhesion is also important for T cell proliferation. CD6 may exert some its functions via association with CD5, probably by fine-tuning CD5 signaling. Ligation of CD6 has antiapoptotic role in chronic lymphocytic leukemia B cells.

Product Info

Amount :	100 tests
Storage condition :	Store in the dark at 2-8°C. Do not freeze. Avoid prolonged exposure to light.

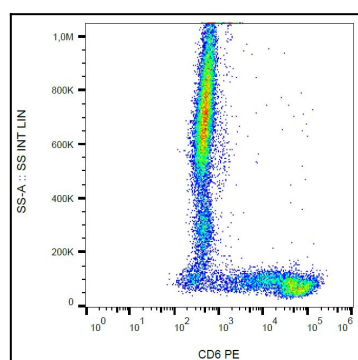


Figure 1: Surface staining of human peripheral blood cells with anti-human CD6 (MEM-98) PE.