

30-1957: Anti-CD56 / NCAM Monoclonal Antibody (Clone:MEM-188)-FITC Conjugated

Clonality :	Monoclonal
Clone Name :	MEM-188
Application :	FACS
Reactivity :	Human
Conjugate :	FITC
Gene :	NCAM1
Gene ID :	4684
Uniprot ID :	P13591
Alternative Name :	NCAM1,NCAM
Isotype :	Mouse IgG2a
Immunogen Information :	KG-1 human acute myelogenous leukemia cell line

Description

CD56 (NCAM, neural cell adhesion molecule) is a transmembrane glycoprotein of immunoglobulin family serving as adhesive molecule which is ubiquitously expressed in nervous system, usually as 120 kDa, 140 kDa or 180 kDa isoform, and it is also found on T cells and NK cells. Polysialic modification results in reduction of CD56-mediated cell adhesion and is involved in cell migration, axonal growth, pathfinding and synaptic plasticity. CD56 is a widely used neuroendocrine marker with a high sensitivity for neuroendocrine tumours and ovarian granulosa cell tumours.

Product Info

Amount :	100 tests
Storage condition :	Store in the dark at 2-8°C. Do not freeze. Avoid prolonged exposure to light.

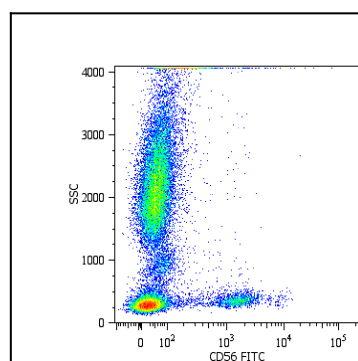


Figure 1: Surface staining of human peripheral blood cells with anti-CD56 (MEM-188) FITC.