

30-1244: Anti-CD52 / CAMPATH-1 Monoclonal Antibody (Clone:HI186)

Clonality :	Monoclonal
Clone Name :	HI186
Application :	FACS
Reactivity :	Human
Gene :	CD52
Gene ID :	1043
Uniprot ID :	P31358
Format :	Purified
Alternative Name :	CD52,CDW52,HE5
Isotype :	Mouse IgG2a
Immunogen Information :	Human tonsil

Description

CD52 (CAMPATH-1, HE5) is a highly glycosylated GPI-anchored 21-28 kDa glycopeptide which is present at high levels on lymphocytes, macrophages, epithelial cells of male reproductive tract and mature sperm. Its 12-amino acid backbone carries a complex N-linked carbohydrate moiety, which differs between sperm and leukocyte CD52, as well as the GPI anchor does. CD52 can be acquired by sperm cells from seminal plasma, where it is released by epithelial cells. Although CD52 is not an essential T-cell costimulator, its triggering results in activation of normal human T cells. CD52 is a very good target for antibody/complement-mediated cell lysis.

Product Info

Amount :	0.1 mg
Purification :	Purified by protein-A affinity chromatography
Storage condition :	Store at 2-8°C. Do not freeze.

Application Note

Flow Cytometry Recommended dilution: 2 μ g/ml
Immunohistochemistry

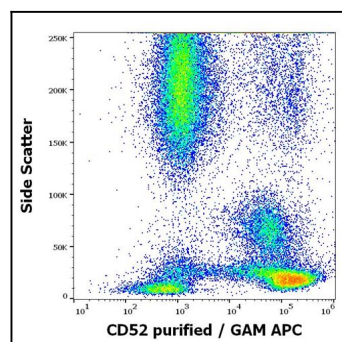


Figure 1: Flow cytometry surface staining pattern of human peripheral whole blood stained using anti-human CD52 (HI186) purified antibody (concentration in sample 4 μ g/ml) GAM APC.

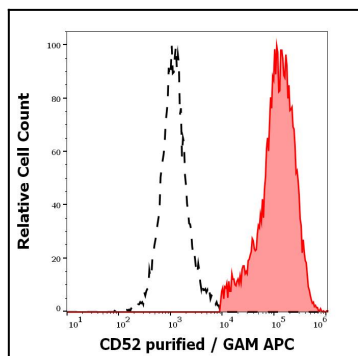


Figure 2: Separation of human CD52 positive lymphocytes (red-filled) from neutrophil granulocytes (black-dashed) in flow cytometry analysis (surface staining) of human peripheral whole blood stained using anti-human CD52 (HI186) purified antibody (concentration in sample 4 µg/ml) GAM APC.

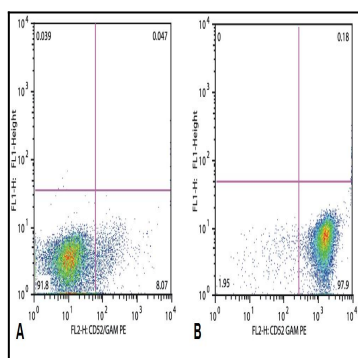


Figure 3: Flow cytometry analysis of CD52 in patients suffering with Acute Lymphoblastic Leukemia (anti-human CD52 (HI186); detection by Goat anti-mouse IgG2b PE). Fig. 1A - CD52 negative pro T ALL (gate leukemic cells) Fig. 1B - CD52 positive cALL (gate leukemic cells)