

30-2140: Anti-CD49d / Integrin alpha 4 Monoclonal Antibody (Clone:9F10)-PE Conjugated

Clonality :	Monoclonal
Clone Name :	9F10
Application :	FACS, IHC-Fr, Functional Assay
Reactivity :	Human, Non-Human Primates, Bovine, Dog, Equine, Feline, Sheep
Conjugate :	PE
Gene :	ITGA4
Gene ID :	3676
Uniprot ID :	P13612
Alternative Name :	ITGA4,CD49D
Isotype :	Mouse IgG1

Description

CD49d / integrin alpha 4, unlike other alpha integrins, neither contains an I-domain, nor undergoes disulfide-linked cleavage. It associates with beta 7 chain to form alpha 4 / beta 7 integrin, and with beta 1 chain (CD29) to form VLA-4 integrin. These complexes are important for lymphocyte migration from circulation into tissue (binding VCAM-1) and homing of T cell subsets to Peyer's patches (binding MadCAM-1), but VLA-4 is also target for invasive bacteria which contain invasins. CD49d is essential for differentiation and migration of hematopoietic stem cells by their adhesion to bone marrow stromal cells, and provides a costimulatory signal to TCR-CD3 complex by inducing phosphorylation of some focal adhesion proteins.

Product Info

Amount :	100 tests
Storage condition :	Store in the dark at 2-8°C. Do not freeze. Avoid prolonged exposure to light.

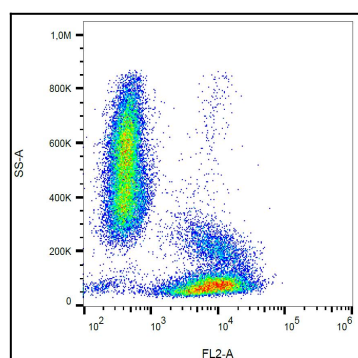


Figure 1: Surface staining of CD49d in human peripheral blood leukocytes with anti-CD49d (9F10) PE.