

## 30-2118: Anti-CD49c / Integrin alpha 3 Monoclonal Antibody (Clone:ASC-1)-PE Conjugated

<b>Clonality :</b>	Monoclonal
<b>Clone Name :</b>	ASC-1
<b>Application :</b>	FACS
<b>Reactivity :</b>	Human
<b>Conjugate :</b>	PE
<b>Gene :</b>	ITGA3
<b>Gene ID :</b>	3675
<b>Uniprot ID :</b>	P26006
<b>Alternative Name :</b>	ITGA3,MSK18
<b>Isotype :</b>	Mouse IgG1
<b>Immunogen Information :</b>	Human SSC-9 cell line (squamous cell carcinoma)

### Description

CD49c / Integrin alpha 3 is a type I transmembrane glycoprotein proteolytically cleaved into two disulfide linked chains. It noncovalently associates with CD29 (integrin beta 1) to form the VLA-3 complex, an adhesion receptor for extracellular matrix components (fibronectin, laminin 1, laminin 5, entactin, and collagen). It is expressed on adherent cells, mainly on fibroblasts, epithelial cells and endothelial cells.

### Product Info

<b>Amount :</b>	100 tests
<b>Storage condition :</b>	Store in the dark at 2-8°C. Do not freeze. Avoid prolonged exposure to light.

### Application Note

Flow cytometry: The reagent is designed for analysis of human blood cells using 10 µl reagent / 100 µl of whole blood or  $10^6$  cells in a suspension. The content of a vial (1 ml) is sufficient for 100 tests.

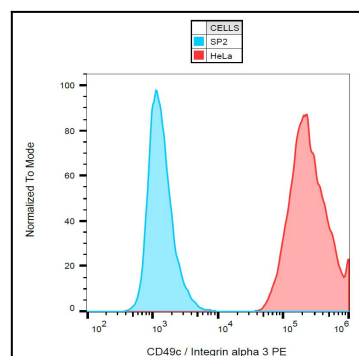


Figure 1: Surface staining of HeLa cells with anti-CD49c (ASC-1) PE.