

## 30-1131: Anti-CD48 / BLAST-1 Monoclonal Antibody (Clone:MEM-102)

<b>Clonality :</b>	Monoclonal
<b>Clone Name :</b>	MEM-102
<b>Application :</b>	FACS
<b>Reactivity :</b>	Human
<b>Gene :</b>	CD48
<b>Gene ID :</b>	962
<b>Uniprot ID :</b>	P09326
<b>Format :</b>	Purified
<b>Alternative Name :</b>	CD48,BCM1,BLAST1
<b>Isotype :</b>	Mouse IgG1
<b>Immunogen Information :</b>	Raji human Burkitt's lymphoma cell line

### Description

CD48 (Blast-1) belongs to the CD2 subset of the Ig superfamily, which includes CD2, CD2F-10, CD58, CD84, CD150, CD229, CD244 and others. These molecules bind to the same or another members of their family, thus mediate homotypic or heterotypic adhesion. CD48 is a GPI-anchored protein broadly expressed on hematopoietic cells and serves as a high affinity ligand for 2B4 and low affinity ligand for CD2. 2B4-CD48 interaction among NK cells and NK-T cells regulates cell proliferation. Signaling through CD48 results in eosinophil activation and CD48 expression is increased in several infectious diseases.

### Product Info

<b>Amount :</b>	0.1 mg
<b>Purification :</b>	Purified by protein-A affinity chromatography
<b>Storage condition :</b>	Store at 2-8°C. Do not freeze.

### Application Note

**Flow Cytometry** *Recommended dilution:* 2 µg/ml  
**Immunoprecipitation Western Blotting Immunohistochemistry**

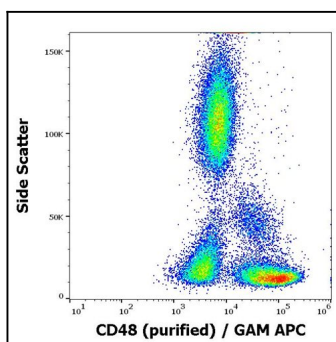


Fig. 1: Flow cytometry surface staining pattern of human peripheral whole blood stained using anti-human CD48 (MEM-102) purified antibody (concentration in sample 3  $\hat{1}$ /<sub>4</sub>g/ml, Goat anti-Mouse APC).

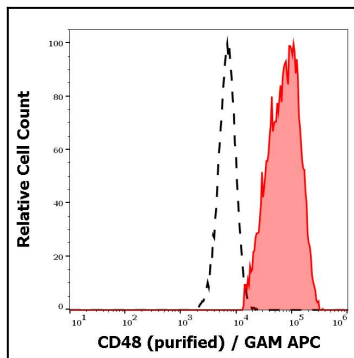


Fig. 2: Separation of CD48 positive lymphocytes (red-filled) from neutrophil granulocytes (black-dashed) in flow cytometry analysis (surface staining) of human peripheral whole blood using anti-human CD48 (MEM-102) purified antibody (concentration in sample 3 1 $\frac{1}{4}$ g/ml, Goat anti-Mouse APC).