

## 30-1951: Anti-CD45RA Monoclonal Antibody (Clone:MEM-56)-FITC Conjugated

<b>Clonality :</b>	Monoclonal
<b>Clone Name :</b>	MEM-56
<b>Application :</b>	FACS, IP, WB, IHC
<b>Reactivity :</b>	Human
<b>Conjugate :</b>	FITC
<b>Gene :</b>	PTPRC
<b>Gene ID :</b>	5788
<b>Uniprot ID :</b>	P08575
<b>Alternative Name :</b>	Receptor-type tyrosine-protein phosphatase C, Leukocyte common antigen, CD45
<b>Isotype :</b>	Mouse IgG2b
<b>Immunogen Information :</b>	Human thymocytes and T lymphocytes.

### Description

CD45RA is a high molecular weight isoform of a receptor-type protein tyrosine phosphatase, CD45 glycoprotein. CD45 is crucial in lymphocyte development and antigen signaling, serving as an important regulator of Src-family kinases, promotes cell survival by modulating integrin-mediated signal transduction pathway and is also involved in DNA fragmentation during apoptosis. CD45 isoforms differ in their extracellular domains, whereas they share identical transmembrane and cytoplasmic domains. These isoforms differ in their ability to translocate into the glycosphingolipid-enriched membrane domains and their expression depends on cell type and physiological state of the cell. CD45RA is expressed e.g. on naïve T cells and normal plasma cells.

### Product Info

<b>Amount :</b>	100 tests
<b>Storage condition :</b>	Store in the dark at 2-8°C. Do not freeze. Avoid prolonged exposure to light.

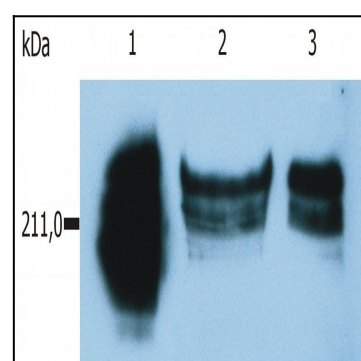


Figure 1: Western Blotting analysis of whole cell lysate of HUT-78 human cutaneous T cell lymphoma cell line. Lane 1: immunostaining with anti-human CD45 control antibody. Lane 2: immunostaining with anti-human CD45RA (MEM-56); sample of cell lysate prepared under non-reducing conditions. Lane 3: immunostaining with anti-human CD45RA (MEM-56); sample of cell lysate prepared under reducing conditions