

30-2209: Anti-CD44 / Pgp-1 Monoclonal Antibody (Clone:MEM-263)-PE Conjugated

Clonality :	Monoclonal
Clone Name :	MEM-263
Application :	FACS, IP, WB, IHC
Reactivity :	Human, Pig, Dog
Conjugate :	PE
Gene :	CD44
Gene ID :	960
Uniprot ID :	P16070
Alternative Name :	CD44,LHR,MDU2,MDU3,MIC4
Isotype :	Mouse IgG1
Immunogen Information :	COS-7 cells (African Green Monkey).

Description

CD44 is a transmembrane glycoprotein expressed on the surface of most cells, which serves as a receptor for hyaluronan. CD44 mediates angiogenesis, cell adhesion, proliferation and migration, it is thus important for lymphocyte activation, recirculation and homing, it can thus serve e.g. as a modulator of macrophage recruitment in response to pathogen. Although CD44 functions are essential for physiological activities of normal cells, elevated CD44 expression correlates with poor prognosis in many carcinomas, facilitating tumour growth and metastasis, antiapoptosis and directional motility of cancer cells.

Product Info

Amount :	100 tests
Storage condition :	Store in the dark at 2-8°C. Do not freeze. Avoid prolonged exposure to light.

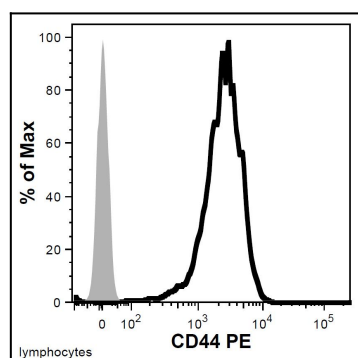


Figure 1: Flow cytometry analysis of human peripheral blood (lymphocyte gate) using anti-CD44 (MEM-263) PE conjugate.