

30-2219: Anti-CD42b / GPIb alpha Monoclonal Antibody (Clone:HIP1)-PE Conjugated(Discontinued)

Clonality :	Monoclonal
Clone Name :	HIP1
Application :	FACS, IHC-Fr, Functional Assay
Reactivity :	Human, Non-Human Primates
Conjugate :	PE
Gene :	GP1BA
Gene ID :	2811
Uniprot ID :	P07359
Alternative Name :	GP1BA
Isotype :	Mouse IgG1
Immunogen Information :	Peripheral blood mononuclear cells of a patient suffering with CLL.

Description

CD42b (GPIb alpha) composes together with GPIb beta, GPIX and GPV the GPIb-IX-V receptor complex critical in the process of platelet-rich thrombus formation by tethering the platelet to a thrombogenic surface. CD42b binds to von Willebrand factor (VWF) exposed at a site of vascular injury, as well as to thrombin, coagulation factors XI and XII, high molecular weight kininogen, TSP-1, integrin Mac-1 and P-selectin. The extracellular domain of CD42b by its interactions also contributes to metastasis.

Product Info

Amount :	100 tests
Storage condition :	Store in the dark at 2-8°C. Do not freeze. Avoid prolonged exposure to light.

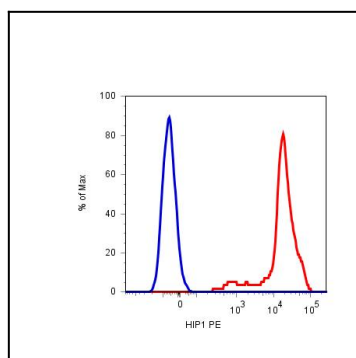


Figure 1: Surface staining of human platelets with anti-CD42b (HIP1) PE.