

30-1981: Anti-CD41 / Platelet GPIIb Monoclonal Antibody (Clone:MEM-06)-FITC Conjugated

Clonality :	Monoclonal
Clone Name :	MEM-06
Application :	FACS
Reactivity :	Human
Conjugate :	FITC
Gene :	ITGA2B
Gene ID :	3674
Uniprot ID :	P08514
Alternative Name :	ITGA2B,GP2B,ITGAB
Isotype :	Mouse IgG1
Immunogen Information :	Leukocytes of patient suffering from LGL-type leukaemia.

Description

CD41 (platelet glycoprotein IIb) is composed of two subunits (120 kDa α , alpha and 23 kDa β , beta) that interact with CD61 in the presence of calcium to form a functional adhesive protein receptor. Upon blood vessel damage, this receptor binds to a variety of proteins including von Willebrand factor, fibrinogen, fibronectin and vitronectin. CD41 is mainly expressed on megakaryocyte-platelet lineage, but generally belongs to the antigens that are expressed during early stages of hematopoietic differentiation.

Product Info

Amount :	100 tests
Storage condition :	Store in the dark at 2-8°C. Do not freeze. Avoid prolonged exposure to light.

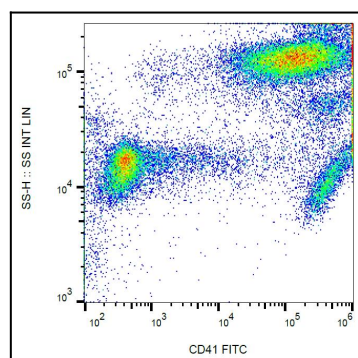


Figure 1: Surface staining of human platelets with anti-human CD41 (MEM-06) FITC.