

## 30-2002: Anti-CD40 Monoclonal Antibody (Clone:HI40a)-FITC Conjugated

<b>Clonality :</b>	Monoclonal
<b>Clone Name :</b>	HI40a
<b>Application :</b>	FACS
<b>Reactivity :</b>	Human
<b>Conjugate :</b>	FITC
<b>Gene :</b>	CD40
<b>Gene ID :</b>	959
<b>Uniprot ID :</b>	P25942
<b>Alternative Name :</b>	B-cell surface antigen CD40, Bp50, CD40L receptor, CDw40
<b>Isotype :</b>	Mouse IgG1
<b>Immunogen Information :</b>	Human CD40a

### Description

CD40 is a costimulatory molecule of the TNF receptor superfamily and is expressed on many cell types, such as B cells, monocytes/macrophages, dendritic cells, endothelial cells, fibroblasts or vascular smooth muscle cells. Interaction of CD40 and its ligand CD154 (CD40L) is required for the generation of antibody responses to T-dependent antigens as well as for the development of germinal centers and memory B cells. In monocytes/macrophages CD40 engagement induces production of pro-inflammatory cytokines and chemokines. CD40-CD154 interactions are also critical for development of CD4 T cell-dependent effector functions. CD40 links innate and adaptive immune responses to bacterial stimuli and serves as an important regulator affecting functions of other costimulatory molecules.

### Product Info

<b>Amount :</b>	100 tests
<b>Storage condition :</b>	Store in the dark at 2-8°C. Do not freeze. Avoid prolonged exposure to light.

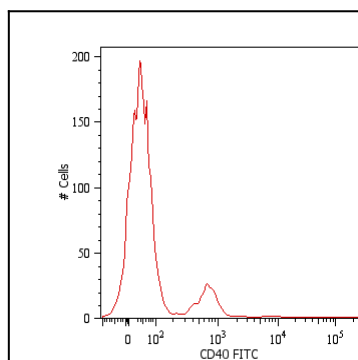


Figure 1: Surface staining of human peripheral blood cells with anti-human CD40 (HI40a) FITC. Cells in the lymphocyte gate were used for analysis.