

30-2218: Anti-CD38 Monoclonal Antibody (Clone:HIT2)-PE Conjugated

Clonality :	Monoclonal
Clone Name :	HIT2
Application :	FACS, WB, IHC, IHC-Fr
Reactivity :	Human
Conjugate :	PE
Gene :	CD38
Gene ID :	952
Uniprot ID :	P28907
Alternative Name :	CD38
Isotype :	Mouse IgG1
Immunogen Information :	Human thymocytes in foetus

Description

CD38 (NAD⁺ glycohydrolase) is a type II transmembrane glycoprotein able to induce activation, proliferation and differentiation of mature lymphocytes and mediate apoptosis of myeloid and lymphoid progenitor cells. Another role of CD38 is provided by enzymatic activity of its extracellular part. CD38 acts as NAD⁺ glycohydrolase converting NAD⁺ into ADP-ribose, as ADP-ribosyl cyclase producing cADPR and as cADPR hydrolase, thus affecting levels of calcium-mobilizing metabolites. ADPR produced by CD38 serves as an important second messenger of neutrophil and dendritic cell migration.

Product Info

Amount :	100 tests
Storage condition :	Store in the dark at 2-8°C. Do not freeze. Avoid prolonged exposure to light.

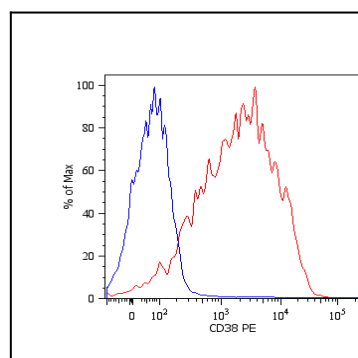


Figure 1: Surface staining of PHA stimulated human peripheral blood lymphocytes with anti-human CD38 (HIT2) PE.