

## 30-1780: Anti-CD36 Monoclonal Antibody (Clone:CB38 (NL07))-APC Conjugated

<b>Clonality :</b>	Monoclonal
<b>Clone Name :</b>	CB38 (NL07)
<b>Application :</b>	FACS
<b>Reactivity :</b>	Human
<b>Conjugate :</b>	APC
<b>Gene :</b>	CD36
<b>Gene ID :</b>	948
<b>Uniprot ID :</b>	P16671
<b>Alternative Name :</b>	Platelet glycoprotein 4, Glycoprotein IIIb, Leukocyte differentiation antigen CD36, PAS IV, Platelet collagen receptor, Platelet glycoprotein , Thrombospondin receptorIV
<b>Isotype :</b>	Mouse IgM
<b>Immunogen Information :</b>	living human myeloid cells

### Description

CD36 (fatty acid translocase, FAT) is an 85-113 kDa ditopic glycosylated protein that belongs to the class B family of scavenger receptors. CD36 is expressed by most resting marginal zone B cells but not by follicular and B1 B cells, and it is rapidly induced on Follicular B cells in vitro upon TLR and CD40 stimulation. CD36 does not affect the development of B cells, but modulates both primary and secondary antibody response. Similarly to glucose transporter GLUT4, CD36 is translocated from intracellular pools to the plasma membrane following cell stimulation by insulin. In mouse, CD36 is responsible for gustatory perception of long-chain fatty acids.

### Product Info

<b>Amount :</b>	100 tests
<b>Storage condition :</b>	Store in the dark at 2-8°C. Do not freeze. Avoid prolonged exposure to light.

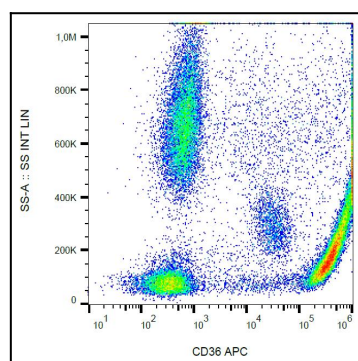


Figure 1: Surface staining of CD36 in human peripheral blood with anti-CD36 (CB38) APC.