

30-2347: Anti-CD35 / CR1 Monoclonal Antibody (Clone:E11)-PE Conjugated

Clonality :	Monoclonal
Clone Name :	E11
Application :	FACS, IP, WB, IHC, IHC-Fr, ICC
Reactivity :	Human, Non-Human Primates
Conjugate :	PE
Gene :	CR1
Gene ID :	1378
Uniprot ID :	P17927
Alternative Name :	CR1,C3BR
Isotype :	Mouse IgG1
Immunogen Information :	Acute monocytic leukemia cells and normal blood monocytes

Description

CD35 (complement receptor 1, CR1) is a monomeric multiple modular cell surface glycoprotein which serves as receptor for C3b and C4b, the most important components of the complement system leading to clearance of foreign macromolecules. It is expressed mainly on the surface of granulocytes, monocytes, erythrocytes, B cells and follicular dendritic cells. Besides its role in complement cascade, CD35 is involved in blocking BCR-induced proliferation and the differentiation of B cells to plasmablasts and their Ig production.

Product Info

Amount :	100 tests
Storage condition :	Store in the dark at 2-8°C. Do not freeze. Avoid prolonged exposure to light.

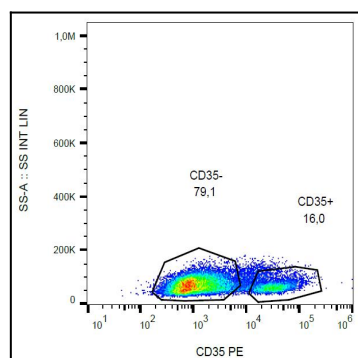


Figure 1: Surface staining of CD35 in human peripheral blood with anti-CD35 (E11) PE.