

36-1551: Monoclonal Antibody to CD31 / PECAM-1 (Endothelial Cell Marker)(Clone : C31.10)

Clonality :	Monoclonal
Clone Name :	C31.10
Application :	FACS,WB,IHC
Reactivity :	Human
Gene :	PECAM1
Gene ID :	5175
Uniprot ID :	P16284
Format :	Purified
Alternative Name :	PECAM1
Isotype :	Mouse IgG1, kappa
Immunogen Information :	Recombinant human CD31 protein

Description

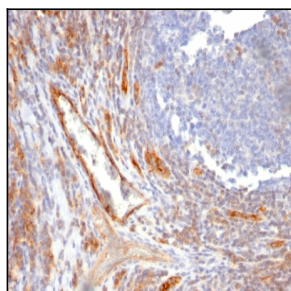
CD31 (PECAM-1) is a transmembrane glycoprotein member of the immunoglobulin supergene family of adhesion molecules. CD31 is expressed by stem cells of the hematopoietic system and is primarily used to identify and concentrate these cells for experimental studies as well as for bone marrow transplantation. Anti-CD31 has shown to be highly specific and sensitive for vascular endothelial cells. Staining of nonvascular tumors (excluding hematopoietic neoplasms) is rare. CD31 MAb reacts with normal, benign, and malignant endothelial cells which make up blood vessel lining. The level of CD31 expression can help to determine the degree of tumor angiogenesis, and a high level of CD31 expression may imply a rapidly growing tumor and potentially a predictor of tumor recurrence.

Product Info

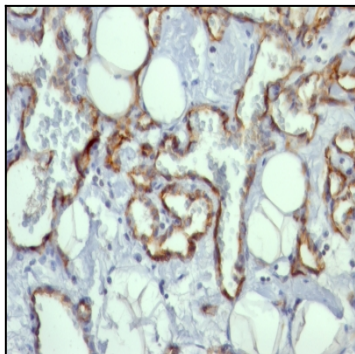
Amount :	100 µg
Purification :	Affinity Chromatography
Content :	100 µg in 500 µl PBS containing 0.05% BSA and 0.05% sodium azide. Sodium azide is highly toxic.
Storage condition :	Store the antibody at 4°C; stable for 6 months. For long-term storage; store at -20°C. Avoid repeated freeze and thaw cycles.

Application Note

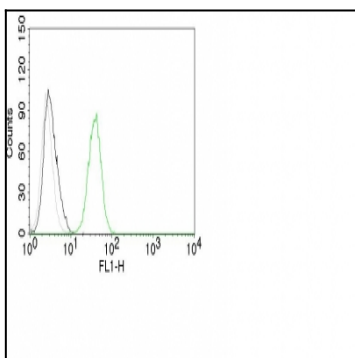
Flow Cytometry (1-2ug/million cells); Western Blot (1-2ug/ml); Immunohistochemistry (Formalin-fixed) (1-2ug/ml for 30 minutes at RT)(Staining of formalin-fixed tissues requires heating tissue sections in 10mM Tris with 1mM EDTA, pH 9.0, for 45 min at 95°C followed by cooling at RT for 20 minutes)



Formalin-fixed, paraffin-embedded human Tonsil stained with CD31 Monoclonal Antibody (C31.10).



Formalin-fixed, paraffin-embedded human Angiosarcoma stained with CD31 Monoclonal Antibody (C31.10).



Flow Cytometry of human CD31 on Jurkat Cells. Black: Cells alone; Grey: Isotype Control; Green: AF488-labeled CD31 Monoclonal Antibody (C31.10).