

30-1788: Anti-CD33 Monoclonal Antibody (Clone:WM53)-APC Conjugated

| | |
|--------------------------------|---|
| Clonality : | Monoclonal |
| Clone Name : | WM53 |
| Application : | FACS, IP, WB, IHC-Fr, ICC, Functional Assay |
| Reactivity : | Human, Non-Human Primates |
| Conjugate : | APC |
| Gene : | CD33 |
| Gene ID : | 945 |
| Uniprot ID : | P20138 |
| Alternative Name : | CD33,SIGLEC3 |
| Isotype : | Mouse IgG1 |
| Immunogen Information : | Human AML cells |

Description

CD33 is a transmembrane protein of the sialic acid-binding immunoglobulin-like lectin (Siglec) family. It belongs to the immunoreceptor tyrosine-based inhibitory motif (ITIM)-containing molecules able of recruiting protein tyrosine phosphatases SHP-1 and SHP-2 to signal assemblies; these ITIMs are also used for ubiquitin-mediated removal of the receptor from the cell surface. CD33 is expressed on cells of myelomonocytic lineage, binds sialic acid residues in N- and O-glycans on cell surfaces, and is a therapeutic target for acute myeloid leukemia.

Product Info

| | |
|----------------------------|---|
| Amount : | 100 tests |
| Storage condition : | Store in the dark at 2-8°C. Do not freeze. Avoid prolonged exposure to light. |

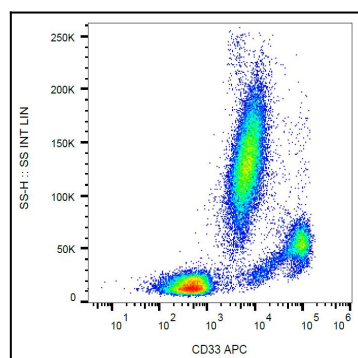


Figure 1: Surface staining of human peripheral blood with anti-CD33 (WM53) APC.