

30-2403: Anti-CD328 / Siglec-7 Monoclonal Antibody (Clone:6-434)-PE Conjugated

Clonality :	Monoclonal
Clone Name :	6-434
Application :	FACS
Reactivity :	Human
Conjugate :	PE
Gene :	SIGLEC7
Gene ID :	27036
Uniprot ID :	Q9Y286
Alternative Name :	SIGLEC7,AIRM1
Isotype :	Mouse IgG1
Immunogen Information :	human dendritic cells

Description

CD328, also known as Siglec-7 or p75/AIRM1, is a 75 kDa type I transmembrane glycoprotein of sialic acid-binding immunoglobulin-like lectin (Siglec) family. CD328 binds to sialylated glycans with alpha2,6 sialyl and alpha2,8 disialyl residues and mediates sialic acid-dependent cell-cell binding. As it contains in its intracellular part the immunoreceptor tyrosine-based inhibitory motif (ITIM), it serves as an inhibitory receptor, e.g. of NK cells.

Product Info

Amount :	100 tests
Storage condition :	Store in the dark at 2-8°C. Do not freeze. Avoid prolonged exposure to light.

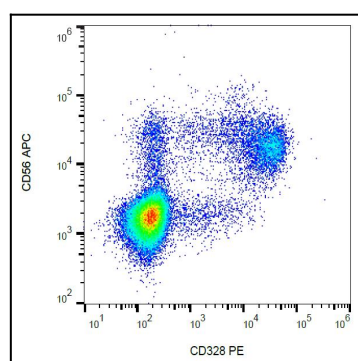


Figure 1: Surface staining of CD328 in human peripheral blood with anti-CD328 (6-434) PE.