

## 30-2271: Anti-CD326 / EpCAM Monoclonal Antibody (Clone:VU-1D9)-PE Conjugated

<b>Clonality :</b>	Monoclonal
<b>Clone Name :</b>	VU-1D9
<b>Application :</b>	FACS, IHC, IP, WB, IHC-Fr, ICC
<b>Reactivity :</b>	Human
<b>Conjugate :</b>	PE
<b>Gene :</b>	EPCAM
<b>Gene ID :</b>	4072
<b>Uniprot ID :</b>	P16422
<b>Alternative Name :</b>	EPCAM,GA733-2,M1S2,M4S1,MIC18,TACSTD1,TROP1
<b>Isotype :</b>	Mouse IgG1
<b>Immunogen Information :</b>	Small cell lung carcinoma cell line H69.

### Description

CD326 / EpCAM (also known as ESA, EGP40, EGP-2, KSA1/4, CO17-1A, GA733-2, MOC31, Ber-EP4) is a 40 kDa transmembrane glycoprotein serving as adhesion molecule in the basolateral membranes in a variety of epithelial cells. CD326 mediates calcium-independent homotypic cell-cell adhesions. CD326 over-expression has been detected in many epithelial tumours and is often associated with bad prognosis. It has been used for diagnostics of (pre-) malignancies at early stages.

### Product Info

<b>Amount :</b>	100 tests
<b>Storage condition :</b>	Store in the dark at 2-8°C. Do not freeze. Avoid prolonged exposure to light.

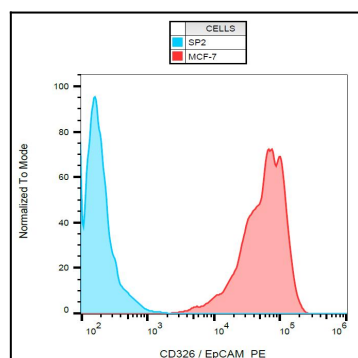


Figure 1: Surface staining of human MCF-7 cell line with anti-human CD326 / EpCAM (VU-1D9) PE.