

## 30-2189: PE Conjugated, Anti-CD31 / PECAM-1 Monoclonal Antibody (Clone:MEM-05)

<b>Clonality :</b>	Monoclonal
<b>Clone Name :</b>	MEM-05
<b>Application :</b>	FACS
<b>Reactivity :</b>	Human
<b>Conjugate :</b>	PE
<b>Gene :</b>	PECAM1
<b>Gene ID :</b>	5175
<b>Uniprot ID :</b>	P16284
<b>Alternative Name :</b>	PECAM1
<b>Isotype :</b>	Mouse IgG1
<b>Immunogen Information :</b>	Leukocytes of patient suffering from LGL-type leukaemia

### Description

CD31 (platelet endothelial cell adhesion molecule-1, PECAM-1) is an inhibitory coreceptor involved in regulation of T cell and B cell signaling by a dual immunoreceptor tyrosine-based inhibitory motif (ITIM) that upon associated kinases-mediated phosphorylation provide docking sites for protein-tyrosine phosphatases. CD31 is expressed ubiquitously within the vascular compartment and is located mainly at junctions between adjacent cells. N-terminal Ig-like domain of CD31 is responsible for its homophilic binding, which plays an important role in cell-cell interactions. CD31 is a multifunctional molecule with diverse roles in modulation of integrin-mediated cell adhesion, transendothelial migration, angiogenesis, apoptosis, negative regulation of immunoreceptor signaling, autoimmunity, macrophage phagocytosis, IgE-mediated anaphylaxis and thrombosis. It is one of key regulatory molecules in vascular system.

### Product Info

<b>Amount :</b>	100 tests
<b>Storage condition :</b>	Store in the dark at 2-8°C. Do not freeze. Avoid prolonged exposure to light.

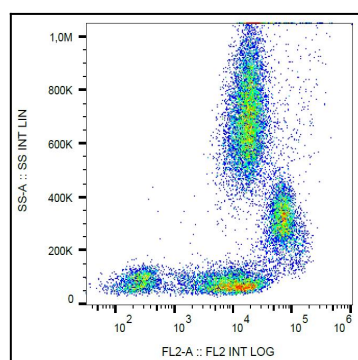


Figure 1: Surface staining of human peripheral blood with anti-human CD31 (MEM-05) PE.