

30-1813AC: APC Conjugated Anti-CD300e / IREM-2 Monoclonal Antibody (Clone:UP-H2)

Clonality :	Monoclonal
Clone Name :	UP-H2
Application :	FACS
Reactivity :	Human
Conjugate :	APC
Gene :	CD300E
Gene ID :	342510
Uniprot ID :	Q496F6
Alternative Name :	CD300E,CD300LE,CLM2,CMRF35A5,IREM2
Isotype :	Mouse IgG1
Immunogen Information :	CD300e-HA-transfected cells

Description

CD300e / IREM-2 (immune receptor expressed by myeloid cells 2), also known as CLM2 or LMIR6, is a monomeric transmembrane glycoprotein with a single extracellular immunoglobulin-like domain. Intracellularly it associates with DAP-12, an ITAM-containing adaptor molecule. CD300e is expressed on mature monocytes and peripheral blood myeloid dendritic cells. Its crosslinking leads to release of pro-inflammatory cytokines, and increased expression of activation markers.

Product Info

Amount :	100 tests
Storage condition :	Store in the dark at 2-8°C. Do not freeze. Avoid prolonged exposure to light.

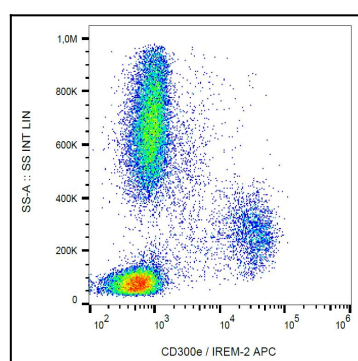


Figure 1: Surface staining of human peripheral blood with anti-human CD300e (UP-H2) APC.