

30-1525: Anti-CD300e / IREM-2 Monoclonal Antibody (Clone:UP-H2) Purified

Clonality :	Monoclonal
Clone Name :	UP-H2
Application :	FACS
Reactivity :	Human
Gene :	CD300E
Gene ID :	342510
Uniprot ID :	Q496F6
Format :	Purified
Alternative Name :	CD300E,CD300LE,CLM2,CMRF35A5,IREM2
Isotype :	Mouse IgG1
Immunogen Information :	CD300e-HA-transfected cells

Description

CD300e / IREM-2 (immune receptor expressed by myeloid cells 2), also known as CLM2 or LMIR6, is a monomeric transmembrane glycoprotein with a single extracellular immunoglobulin-like domain. Intracellularly it associates with DAP-12, an ITAM-containing adaptor molecule. CD300e is expressed on mature monocytes and peripheral blood myeloid dendritic cells. Its crosslinking leads to release of pro-inflammatory cytokines, and increased expression of activation markers.

Product Info

Amount :	0.1 mg
Purification :	Purified by protein-A affinity chromatography
Storage condition :	Store at 2-8°C. Do not freeze.

Application Note

Flow Cytometry Immunoprecipitation Western Blotting Functional Application stimulation

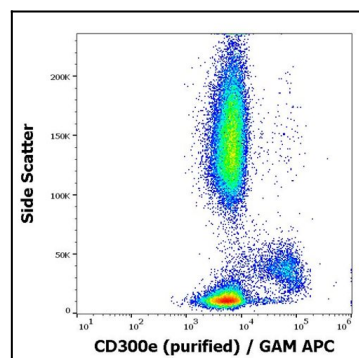


Figure 1: Flow cytometry surface staining pattern of human peripheral whole blood stained using anti-human CD300e (UP-H2) purified antibody (GAM APC)

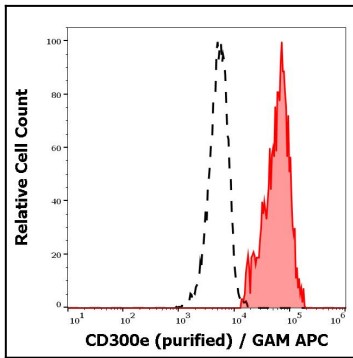


Figure 2: Separation of human monocytes (red-filled) from CD300e negative lymphocytes (black-dashed) in flow cytometry analysis (surface staining) of human peripheral whole blood using anti-human CD300e (UP-H2) purified antibody (GAM APC).