

30-2246: Anti-CD300a Monoclonal Antibody (Clone:MEM-260)-PE Conjugated

Clonality :	Monoclonal
Clone Name :	MEM-260
Application :	FACS, WB
Reactivity :	Human
Conjugate :	PE
Gene :	CD300A
Gene ID :	11314
Uniprot ID :	Q9UGN4
Alternative Name :	CD300A,CMRF35H,IGSF12,HSPC083
Isotype :	Mouse IgG1
Immunogen Information :	HPB human acute lymphoid leukemia cell line

Description

CD300a (CMRF-35H, IRp60) is a non-MHC-specific inhibitory receptor of immunoglobulin superfamily, which contains three immunoreceptor tyrosine-based inhibitory motifs (ITIMs) that associate with SH2-containing phosphatases SHP-1 and SHP-2. CD300a is expressed on many cell types including T cells, NK cells, neutrophils, eosinophils or mast cells. Its triggering inhibits activating signals such as those of IL5, GM-CSF or eotaxin, as well as suppresses mast cell degranulation or NK cell cytotoxic activity.

Product Info

Amount :	100 tests
Storage condition :	Store in the dark at 2-8°C. Do not freeze. Avoid prolonged exposure to light.

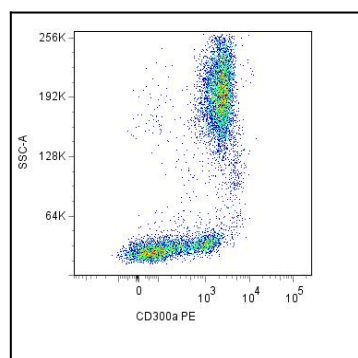


Figure 1: Surface staining of human peripheral blood cells with anti-CD300a (MEM-260) PE.