

30-1352: Anti-CD300a Monoclonal Antibody (Clone:MEM-260)

| | |
|--------------------------------|---|
| Clonality : | Monoclonal |
| Clone Name : | MEM-260 |
| Application : | FACS |
| Reactivity : | Human |
| Gene : | CD300A |
| Gene ID : | 11314 |
| Uniprot ID : | Q9UGN4 |
| Format : | Purified |
| Alternative Name : | CD300A,CMRF35H,IGSF12,HSPC083 |
| Isotype : | Mouse IgG1 |
| Immunogen Information : | HPB human acute lymphoid leukemia cell line |

Description

CD300a (CMRF-35H, IRp60) is a non-MHC-specific inhibitory receptor of immunoglobulin superfamily, which contains three immunoreceptor tyrosine-based inhibitory motifs (ITIMs) that associate with SH2-containing phosphatases SHP-1 and SHP-2. CD300a is expressed on many cell types including T cells, NK cells, neutrophils, eosinophils or mast cells. Its triggering inhibits activating signals such as those of IL5, GM-CSF or eotaxin, as well as suppresses mast cell degranulation or NK cell cytotoxic activity.

Product Info

| | |
|----------------------------|---|
| Amount : | 0.1 mg |
| Purification : | Purified by protein-A affinity chromatography |
| Storage condition : | Store at 2-8°C. Do not freeze. |

Application Note

Flow Cytometry *Recommended dilution:* 2 µg/ml

Western Blotting *Positive material:* HPB cell line

Negative material: JURKAT human cell line, RAJI human cell line

Sample preparation: Resuspend approx. 50 mil. cells in 1 ml cold Lysis buffer (1% laurylmaltoside in 20 mM Tris/Cl, 100 mM NaCl pH 8.2, 50 mM NaF including Protease inhibitor Cocktail). Incubate 60 min on ice. Centrifuge to remove cell debris. Mix lysate with non-reducing SDS-PAGE sample buffer.

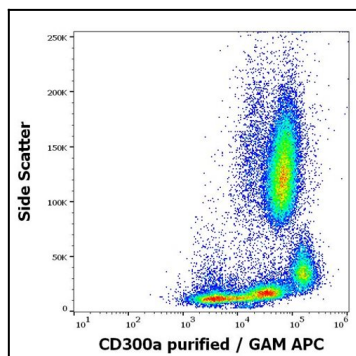


Figure 1: Flow cytometry surface staining pattern of human peripheral whole blood stained using anti-human CD300a (MEM-260) purified antibody (concentration in sample 4 µg/ml) GAM APC.

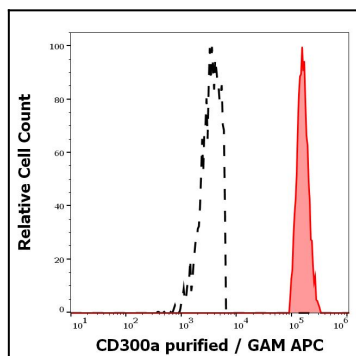


Figure 2: Separation of human monocytes (red-filled) from CD300a negative lymphocytes (black-dashed) in flow cytometry analysis (surface staining) of human peripheral whole blood stained using anti-human CD300a (MEM-260) purified antibody (concentration in sample 4 µg/ml) GAM APC.