

## 30-1315: Anti-CD30 / Ki-1 Monoclonal Antibody (Clone:MEM-268)

<b>Clonality :</b>	Monoclonal
<b>Clone Name :</b>	MEM-268
<b>Application :</b>	IHC,FACS
<b>Reactivity :</b>	Human
<b>Gene :</b>	TNFRSF8
<b>Gene ID :</b>	943
<b>Uniprot ID :</b>	P28908
<b>Format :</b>	Purified
<b>Alternative Name :</b>	TNFRSF8,CD30,D1S166E
<b>Isotype :</b>	Mouse IgG
<b>Immunogen Information :</b>	Expression vector containing CD30 cDNA (booster suspension of THP-1 cell line)

### Description

CD30 is a type I transmembrane glycoprotein of the TNF receptor superfamily. CD30 was originally identified as a cell surface antigen of Hodgkins and Reed-Sternberg cells using monoclonal antibody Ki-1. The ligand for CD30 is CD30L (CD153). The binding of CD30 to CD30L mediates pleiotropic effects including cell proliferation, activation, differentiation, and apoptotic cell death. CD30 has a critical role in the pathophysiology of Hodgkin's disease and other CD30+ lymphomas. CD30 acts as a costimulatory molecule in thymic negative selection. In addition to its expression on Hodgkin's and Reed-Sternberg cells, CD30 is also found in some non-Hodgkin's lymphomas (including Burkitt's lymphomas), virus-infected T and B cells, and on normal T and B cells after activation. In T cells, CD30 expression is present on a subset of T cells that produce Th2-type cytokines and on CD4+/CD8+ thymocytes that co-express CD45RO and the IL4 receptor. Soluble form of CD30 (sCD30) serves as a marker reflecting Th2 immune response.

### Product Info

<b>Amount :</b>	0.1 mg
<b>Purification :</b>	Purified by protein-A affinity chromatography
<b>Content :</b>	1mg/ml, Phosphate buffered saline (PBS), pH 7.4, 15 mM sodium azide
<b>Storage condition :</b>	Store at 2-8°C. Do not freeze.

### Application Note

Flow cytometry: Recommended dilution: 5 µg/ml.

Immunohistochemistry (paraffin sections): Recommended dilution: 5 µg/ml, positive tissue: thymus.

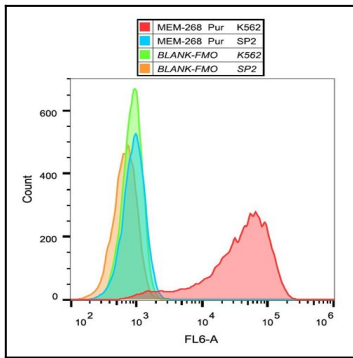


Figure 1: Flow cytometry analysis of K562 cells with anti-human CD30 purified, GAM APC