

30-2282: Anti-CD3 activation epitope Monoclonal Antibody (Clone:APA1/1)-PE Conjugated

Clonality :	Monoclonal
Clone Name :	APA1/1
Application :	FACS, IP, WB, IHC-Fr, ICC
Reactivity :	Human, Mouse
Conjugate :	PE
Gene :	CD4
Gene ID :	920
Uniprot ID :	P01730
Alternative Name :	CD4
Isotype :	Mouse IgG1
Immunogen Information :	Purified human CD3 proteins isolated from thymus

Description

CD3 complex is crucial in transducing antigen-recognition signals into the cytoplasm of T cells and in regulating the cell surface expression of the TCR complex. T cell activation through the antigen receptor (TCR) involves the cytoplasmic tails of the CD3 subunits CD3 gamma, CD3 delta, CD3 epsilon and CD3 zeta. These CD3 subunits are structurally related members of the immunoglobulins super family encoded by closely linked genes on human chromosome 11. The CD3 components have long cytoplasmic tails that associate with cytoplasmic signal transduction molecules. This association is mediated at least in part by a double tyrosine-based motif present in a single copy in the CD3 subunits. CD3 may play a role in TCR-induced growth arrest, cell survival and proliferation.

Product Info

Amount :	0.1 mg
Storage condition :	Store in the dark at 2-8°C. Do not freeze. Avoid prolonged exposure to light.

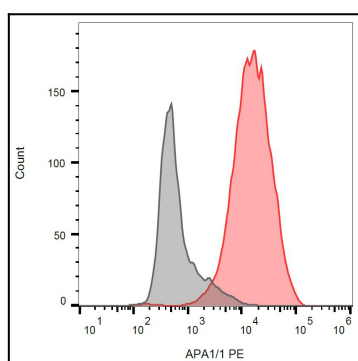


Figure 1: Intracellular staining of JURKAT cells with anti-CD3 epsilon activation epitope (APA1/1) PE.