

30-2268: Anti-CD3 Monoclonal Antibody (Clone:145-2C11)-PE Conjugated

Clonality :	Monoclonal
Clone Name :	145-2C11
Application :	FACS, IP, IHC-Fr, ICC, Functional Assay
Reactivity :	Mouse
Conjugate :	PE
Gene :	Cd3d
Gene ID :	12500
Uniprot ID :	P04235
Alternative Name :	Cd3d,T3d
Isotype :	Hamster IgG
Immunogen Information :	Mouse BM10-37 cytotoxic T lymphocytes

Description

CD3 complex is crucial in transducing antigen-recognition signals into the cytoplasm of T cells and in regulating the cell surface expression of the TCR complex. T cell activation through the antigen receptor (TCR) involves the cytoplasmic tails of the CD3 subunits CD3 gamma, CD3 delta, CD3 epsilon and CD3 zeta. These CD3 subunits are structurally related members of the immunoglobulins superfamily encoded by closely linked genes on human chromosome 11. The CD3 components have long cytoplasmic tails that associate with cytoplasmic signal transduction molecules. This association is mediated at least in part by a double tyrosine-based motif present in a single copy in the CD3 subunits. CD3 may play a role in TCR-induced growth arrest, cell survival and proliferation.

Product Info

Amount :	0.1 mg
Storage condition :	Store in the dark at 2-8°C. Do not freeze. Avoid prolonged exposure to light.

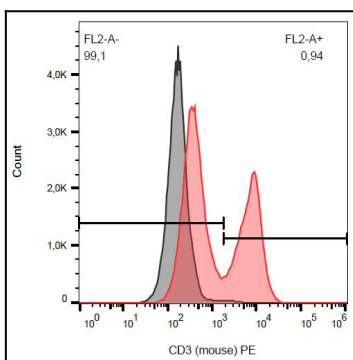


Figure 1: Surface staining of CD3 in murine splenocytes with anti-CD3 (145-2C11) PE.