

30-1680: Anti-CD3 Monoclonal Antibody (Clone:MEM-57)-APC Conjugated

Clonality :	Monoclonal
Clone Name :	MEM-57
Application :	FACS, IP, Functional Assay
Reactivity :	Human
Conjugate :	APC
Gene :	CD3E
Gene ID :	916
Uniprot ID :	P07766
Alternative Name :	CD3E,T3E
Isotype :	Mouse IgG2a
Immunogen Information :	Human thymocytes and T lymphocytes.

Description

CD3 complex is crucial in transducing antigen-recognition signals into the cytoplasm of T cells and in regulating the cell surface expression of the TCR complex. T cell activation through the antigen receptor (TCR) involves the cytoplasmic tails of the CD3 subunits CD3 gamma, CD3 delta, CD3 epsilon and CD3 zeta. These CD3 subunits are structurally related members of the immunoglobulins super family encoded by closely linked genes on human chromosome 11. The CD3 components have long cytoplasmic tails that associate with cytoplasmic signal transduction molecules. This association is mediated at least in part by a double tyrosine-based motif present in a single copy in the CD3 subunits. CD3 may play a role in TCR-induced growth arrest, cell survival and proliferation. The CD3 antigen is present on 68-82% of normal peripheral blood lymphocytes, 65-85% of thymocytes and Purkinje cells in the cerebellum. It is never expressed on B or NK cells. Decreased percentages of T lymphocytes may be observed in some autoimmune diseases.

Product Info

Amount :	100 tests
Storage condition :	Store in the dark at 2-8°C. Do not freeze. Avoid prolonged exposure to light.

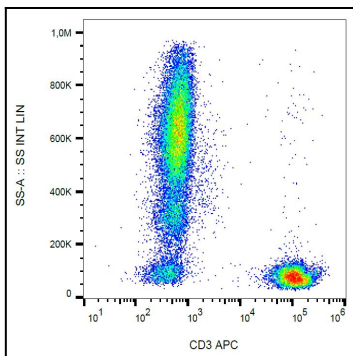


Figure 1: Surface staining of CD3 in human peripheral blood with anti-CD3 (MEM-57) APC.