

## 30-2267: PE Conjugated, Anti-CD28 Monoclonal Antibody (Clone:CD28.2)

<b>Clonality :</b>	Monoclonal
<b>Clone Name :</b>	CD28.2
<b>Application :</b>	FACS
<b>Reactivity :</b>	Human
<b>Conjugate :</b>	PE
<b>Gene :</b>	CD28
<b>Gene ID :</b>	940
<b>Uniprot ID :</b>	P10747
<b>Alternative Name :</b>	CD28
<b>Isotype :</b>	Mouse IgG1
<b>Immunogen Information :</b>	DC28.1.3.3 murine T cell hybridoma transfected with human CD28 cDNA

### Description

CD28 is the critical T cell costimulatory receptor which provides to the cell the important second activation signal by binding CD80 and CD86 that are expressed by antigen presenting cells. Besides its costimulation role CD28 functions in preventing T cells from anergic hypo-responsive state or from undergoing premature apoptotic cell death. CD28 is also expressed on human fetal NK cells and some NK cell lines, whereas on murine NK cells the CD28 expression is much broader.

### Product Info

<b>Amount :</b>	100 tests
<b>Storage condition :</b>	Store in the dark at 2-8°C. Do not freeze. Avoid prolonged exposure to light.

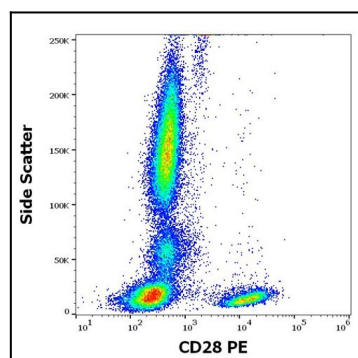


Figure 1: Flow cytometry surface staining pattern of human peripheral whole blood stained using anti-human CD28 (CD28.2) PE antibody (20 µl reagent / 100 µl of peripheral whole blood).

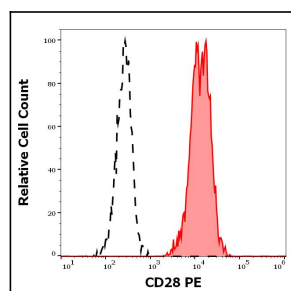


Figure 2: Separation of human CD28 positive lymphocytes (red-filled) from CD28 negative lymphocytes (black-dashed) in flow cytometry analysis (surface staining) of human peripheral whole blood stained using anti-human CD28 (CD28.2) PE antibody (20 µl reagent / 100 µl of peripheral whole blood).