

30-2037: FITC conjugated, Anti-CD28 Monoclonal Antibody (Clone:CD28.2)-FITC Conjugated

Clonality :	Monoclonal
Clone Name :	CD28.2
Application :	FACS
Reactivity :	Human
Conjugate :	FITC
Gene :	CD28
Gene ID :	940
Uniprot ID :	P10747
Alternative Name :	CD28
Isotype :	Mouse IgG1
Immunogen Information :	DC28.1.3.3 murine T cell hybridoma transfected with human CD28 cDNA

Description

CD28 is the critical T cell costimulatory receptor which provides to the cell the important second activation signal by binding CD80 and CD86 that are expressed by antigen presenting cells. Besides its costimulation role CD28 functions in preventing T cells from anergic hyporesponsive state or from undergoing premature apoptotic cell death. CD28 is also expressed on human fetal NK cells and some NK cell lines, whereas on murine NK cells the CD28 expression is much broader.

Product Info

Amount :	100 tests
Storage condition :	Store in the dark at 2-8°C. Do not freeze. Avoid prolonged exposure to light.

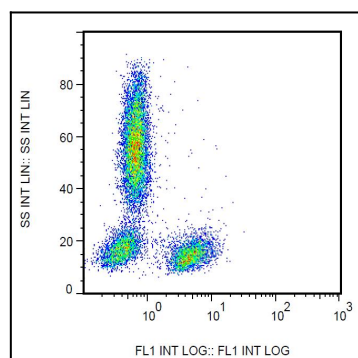


Figure 1: Surface staining of human peripheral blood leukocytes with anti-human CD28 (CD28.2) FITC.