

30-2145: Anti-CD279 / PD-1 Monoclonal Antibody (Clone:EH12.2H7)-PE Conjugated

Clonality :	Monoclonal
Clone Name :	EH12.2H7
Application :	FACS, IHC-Fr, Functional Assay
Reactivity :	Human, Non-Human Primates
Conjugate :	PE
Gene :	PDCD1
Gene ID :	5133
Uniprot ID :	Q15116
Alternative Name :	PDCD1,PD1
Isotype :	Mouse IgG1

Description

CD279 / PD-1 (programmed cell death 1), a transmembrane protein of CD28/CTLA-4 family. It is expressed inducibly mainly on activated T, B, and myeloid cells and plays a role in maintaining peripheral self-tolerance. Binding to its receptors CD273 and CD274 is associated with inhibition of T cell proliferation and induction of their anergy. It is also expressed during thymic development. Some variants of CD279 are associated with susceptibility to systemic lupus erythematosus, type 1 diabetes, and rheumatoid arthritis.

Product Info

Amount :	100 tests
Storage condition :	Store in the dark at 2-8°C. Do not freeze. Avoid prolonged exposure to light.

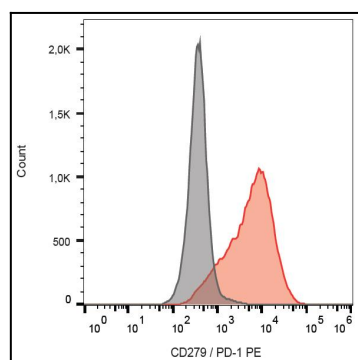


Figure 1: Surface staining of PHA-activated (3 days) human PBMC with anti-CD279 (EH12.2H7) PE.