

## 30-2052: Anti-CD26 Monoclonal Antibody (Clone:BA5b)-FITC Conjugated

|                                |                      |
|--------------------------------|----------------------|
| <b>Clonality :</b>             | Monoclonal           |
| <b>Clone Name :</b>            | BA5b                 |
| <b>Application :</b>           | FACS                 |
| <b>Reactivity :</b>            | Human                |
| <b>Conjugate :</b>             | FITC                 |
| <b>Gene :</b>                  | DPP4                 |
| <b>Gene ID :</b>               | 1803                 |
| <b>Uniprot ID :</b>            | P27487               |
| <b>Alternative Name :</b>      | DPP4,ADCP2,CD26      |
| <b>Isotype :</b>               | Mouse IgG2a          |
| <b>Immunogen Information :</b> | A human T cell clone |

### Description

CD26, also known as dipeptidyl peptidase IV (DPP-IV), is a homodimeric cell surface serine peptidase that degrades IFN-gamma-induced cytokines, acts as a T cell costimulatory molecule, and participates in multiple immunopathological roles in leukocyte homing and inflammation. Alterations in its peptidase activity are characteristic of malignant transformation. The enzymatic activity increases dramatically with tumour grade and severity. CD26 is expressed in various blood cell types, but also e.g. in cells that are histogenetically related to activated fibroblasts. Alterations in CD26 density have been reported on circulating monocytes and CD4+ T cells during rheumatoid arthritis and systemic lupus erythematosus.

### Product Info

|                            |   |
|----------------------------|---|
| <b>Amount :</b>            | 100 tests   |
| <b>Storage condition :</b> | Store in the dark at 2-8°C. Do not freeze. Avoid prolonged exposure to light. |

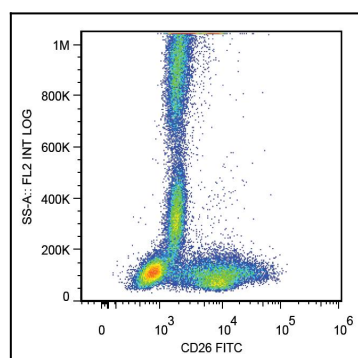


Figure 1: Surface staining of human peripheral blood cells with anti-human CD26 (BA5b) FITC.