

30-2053: Anti-CD25 / IL-2R alpha chain Monoclonal Antibody (Clone:PC61.5)-FITC Conjugated(Discontinued)

Clonality :	Monoclonal
Clone Name :	PC61.5
Application :	FACS, IP, IHC-Fr, Functional Assay
Reactivity :	Mouse
Conjugate :	FITC
Gene :	Il2ra
Gene ID :	16184
Uniprot ID :	P01590
Alternative Name :	Il2ra,Il2r
Isotype :	Rat IgG1
Immunogen Information :	B6.1 CTL cell line

Description

CD25 (IL2Ralpha, Tac) is a ligand-binding alpha subunit of interleukin 2 receptor (IL2R). Together with beta and gamma subunit CD25 constitutes the high affinity IL2R, whereas CD25 alone serves as the low affinity IL2R. CD25 expression rapidly increases upon T cell activation. The 55 kDa CD25 molecule is enzymatically cleaved and shed from the cell surface as a soluble 45 kDa s-Tac, whose concentration in serum can be used as a marker of T cell activation. Expression of CD25 indicates the neoplastic phenotype of mast cells. CD25+ CD4+ FoxP3+ regulatory cells (Treg cells) play a crucial role in the control of organ-specific autoimmune diseases.

Product Info

Amount :	0.1 mg
Storage condition :	Store in the dark at 2-8°C. Do not freeze. Avoid prolonged exposure to light.

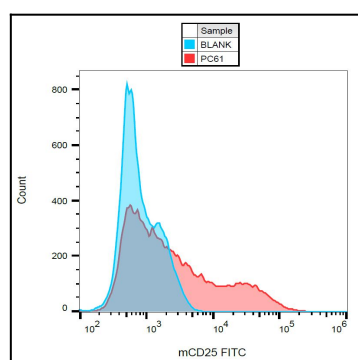


Figure 1: Surface staining of CD25 in PHA activated (3 days) murine splenocytes using anti-CD25 (PC61.5) FITC.