

## 30-2094: Anti-CD23 Monoclonal Antibody (Clone:EBVCS-5)-FITC Conjugated(Discontinued)

<b>Clonality :</b>	Monoclonal
<b>Clone Name :</b>	EBVCS-5
<b>Application :</b>	FACS, IP
<b>Reactivity :</b>	Human
<b>Conjugate :</b>	FITC
<b>Gene :</b>	FCER2
<b>Gene ID :</b>	2208
<b>Uniprot ID :</b>	P06734
<b>Alternative Name :</b>	FCER2, CD23A, CLEC4J, FCE2, IGEBF
<b>Isotype :</b>	Mouse IgG1
<b>Immunogen Information :</b>	EBV-transformed human cells

### Description

CD23 (Fc epsilon RII), the low affinity IgE receptor, is a 45 kDa type II membrane glycoprotein expressed more or less on eosinophils, follicular dendritic cells, Langerhans cells, mature B cells (mainly upon activation), EBV-transformed lymphoblasts, monocytes, and subpopulation of platelets. A soluble form of 37 kDa and other its fragments were also described. CD23 mediates IgE-dependent cytotoxicity by eosinophils and macrophages, and downregulates IgE secretion in response to high levels of IgE, involving release of pro-inflammatory cytokines.

### Product Info

<b>Amount :</b>	100 tests
<b>Storage condition :</b>	Store in the dark at 2-8°C. Do not freeze. Avoid prolonged exposure to light.

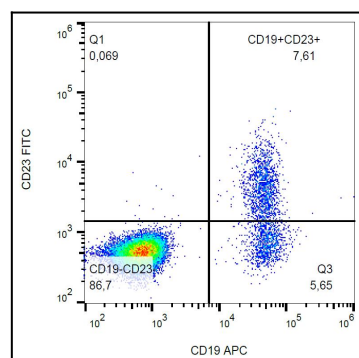


Figure 1: Surface staining of human peripheral blood cells with anti-human CD23 (EBVCS-5) FITC.