

30-1200: Anti-CD222 / IGF2 receptor / CIMPR Monoclonal Antibody (Clone:MEM-238)

Clonality :	Monoclonal
Clone Name :	MEM-238
Application :	FACS, IP, WB
Reactivity :	Human, Non-Human Primates
Gene :	IGF2R
Gene ID :	3482
Uniprot ID :	P11717
Format :	Purified
Alternative Name :	IGF2R,MPRI
Isotype :	Mouse IgG1
Immunogen Information :	Recombinant <i>Vaccinia</i> virus encoding CD222.

Description

CD222 (CIMPR, cation-independent mannose 6-phosphate receptor; IGF2 receptor) is a ubiquitously expressed 250 kDa transmembrane protein. No more than 10% of CD222 is present on the cell surface where it serves as a multifunctional receptor. Intracellular (major) fraction of CD222 is involved in transport of newly synthesized lysosomal enzymes modified by mannose 6-phosphate from Golgi apparatus to lysosomes. The cell surface CD222 binds and internalizes exogenous mannose 6-phosphate-containing ligands. Importantly, CD222 is crucial for internalization and degradation of insulin-like growth factor 2, thus controlling cell growth. CD222 also complexes CD87 (urokinase-type plasminogen-activator receptor), plasminogen and latent TGF-beta, last but not least CD222 serves as a receptor for heparanase and even for *Listeria*.

Product Info

Amount :	0.1 mg
Purification :	Purified by protein-A affinity chromatography
Storage condition :	Store at 2-8°C. Do not freeze.

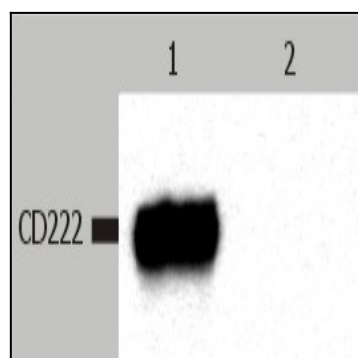


Figure 1: Western Blotting analysis (non-reducing conditions) of CD222 in whole cell lysate of JURKAT human peripheral blood T cell leukemia cell line. Lane 1: immunostaining with anti-CD222 (MEM-238). Lane 2: immunostaining with Isotype mouse IgG1 control (PPV-06;)