

30-1979: Anti-CD21 Monoclonal Antibody (Clone:LT21)-FITC Conjugated

| | |
|--------------------------------|--------------------------------------|
| Clonality : | Monoclonal |
| Clone Name : | LT21 |
| Application : | FACS, IHC-Fr |
| Reactivity : | Human, Pig, Bovine, Dog |
| Conjugate : | FITC |
| Gene : | CR2 |
| Gene ID : | 1380 |
| Uniprot ID : | P20023 |
| Alternative Name : | CR2,C3DR |
| Isotype : | Mouse IgG1 |
| Immunogen Information : | IM9 human B-lymphoblastoid cell line |

Description

CD21 (complement receptor 2, CR2) binds C3 complement fragments, especially its breakdown fragments, which remain covalently attached to complement activating surfaces or antigen. CD21 has important roles in uptake and retention of immunocomplexes, survival of memory B cells and in development and maintenance of the humoral response to T-dependent antigens. CD21 also serves as a key receptor for Epstein-Barr virus binding and is involved in targeting prions to follicular dendritic cells and expediting neuroinvasion following peripheral exposure to prions. A soluble form of the CD21 (sCD21) is shed from the lymphocyte surface and retains its ability to bind respective ligands.

Product Info

| | |
|----------------------------|-------------------------------------------------------------------------------|
| Amount : | 100 tests |
| Storage condition : | Store in the dark at 2-8°C. Do not freeze. Avoid prolonged exposure to light. |

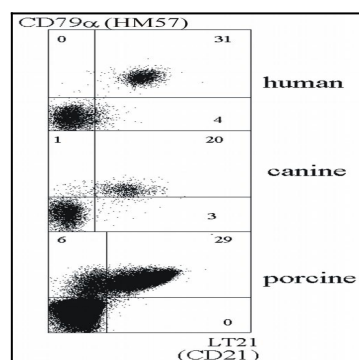


Figure 1: Double staining of human, canine and porcine B lymphocytes with anti-CD79a (HM57) and anti-CD21 (LT21) antibody.